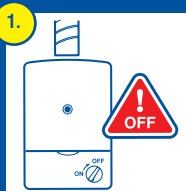
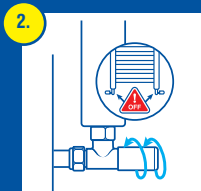


How to use Fernox Protector F1

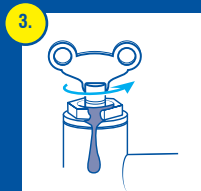
Step-by-step guide on how to dose Fernox Protector F1 into an existing towel rail. If you are installing a new towel rail - before you fill the towel rail with water go to Step 7.



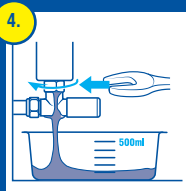
1. Turn off the boiler



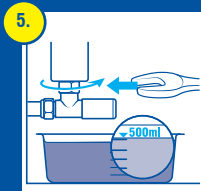
2. Turn off the valves at the bottom of the towel rail



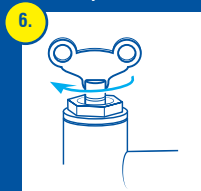
3. Open the bleed valve with a radiator key



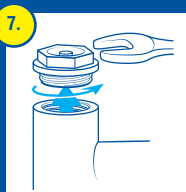
4. Loosen the bottom nut to allow ONLY 500 ml of water to drain from the towel rail



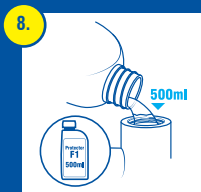
5. Tighten the nut back up once 500 ml of water has been drained



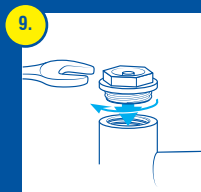
6. Close the bleed valve with a radiator key



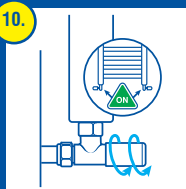
7. Open the top valve



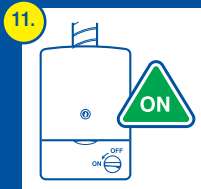
8. Pour in Protector F1



9. Close the top valve



10. Turn on the valves at the bottom of the towel rail



11. Turn on the boiler